

大きな古時計

ワーク

トラック毎に音色を設定し、PANやボリューム調整などしてみましょう。

11 Clarinet



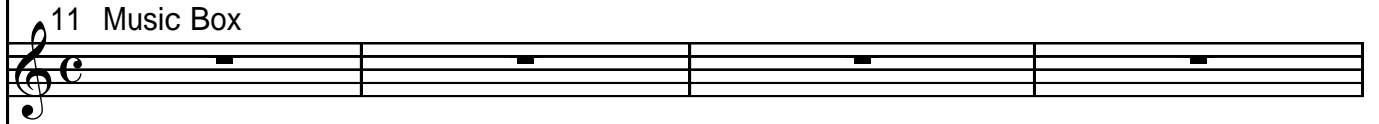
5 E.piano1



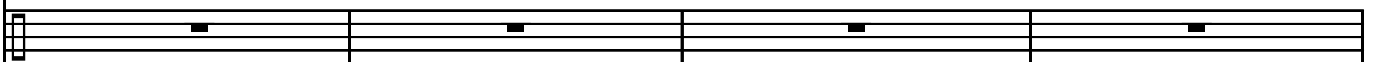
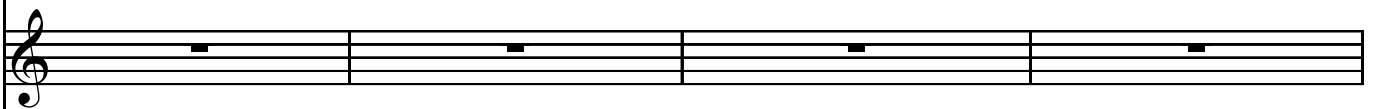
33 Acoustic Bass



11 Music Box



Standard drum





Musical score system 1, consisting of five staves. The top staff is a treble clef with a melodic line. The second staff is a treble clef with a chordal accompaniment. The third staff is a bass clef with a rhythmic accompaniment. The fourth and fifth staves are empty.



Musical score system 2, consisting of five staves. The top staff is a treble clef with a melodic line. The second staff is a treble clef with a chordal accompaniment. The third staff is a bass clef with a rhythmic accompaniment. The fourth and fifth staves are empty.

49 strings

closed hi-hat
bass drum
snare drum

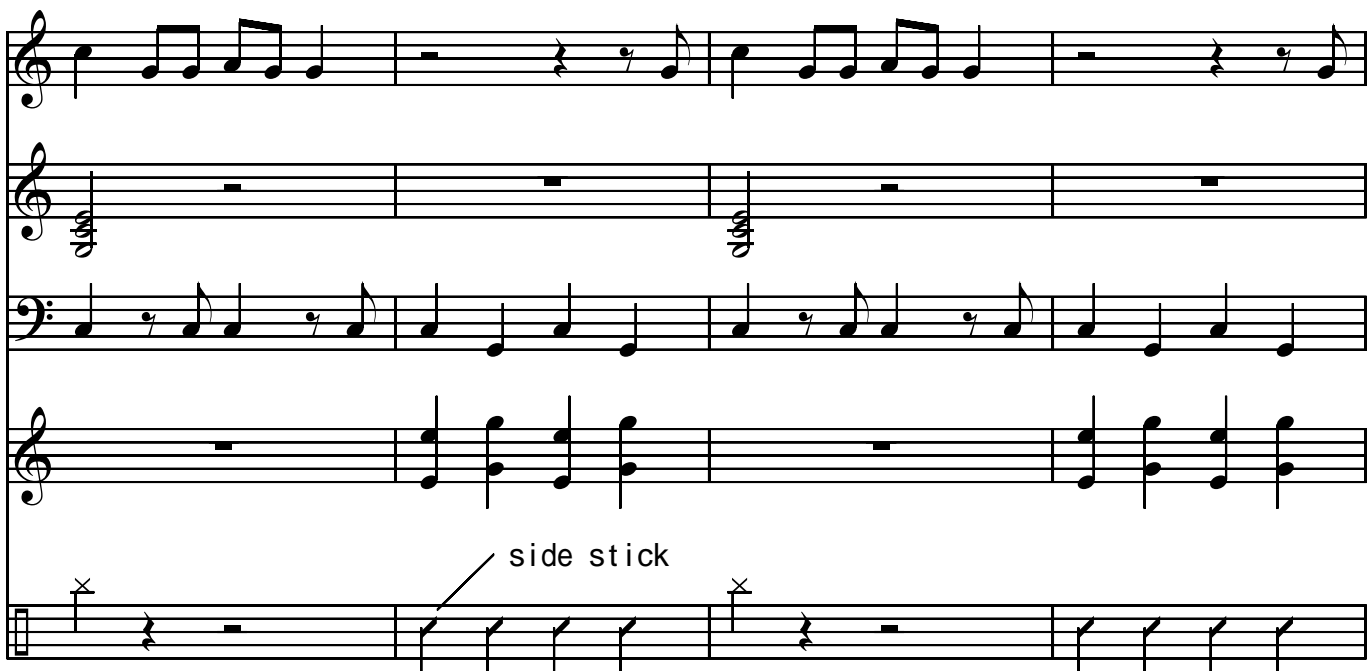
100 50 100 40
100 100 90

This system contains five staves. The top staff is a vocal line in treble clef. The second staff is for 49 strings in treble clef. The third staff is a bass line in bass clef. The fourth staff is a piano part in treble clef. The fifth staff is a drum part in bass clef, featuring a pattern of closed hi-hat, bass drum, and snare drum with dynamic markings: 100, 50, 100, 40, 100, 100, 90.

This system contains five staves, mirroring the structure of the first system. It includes a vocal line, 49 strings, a bass line, a piano part, and a drum part. The drum part continues with the same rhythmic pattern of closed hi-hat, bass drum, and snare drum.

This system contains five staves of music. The top staff is a vocal line with a melodic line. The second staff is a piano accompaniment with chords. The third staff is a bass line with a rhythmic pattern. The fourth staff is a piano accompaniment with chords. The fifth staff is a drum part with a steady eighth-note pattern and a single crash cymbal hit marked with an 'x' and an accent (>) in the fourth measure. A label 'crash cymbal' with an arrow points to this hit.

This system contains five staves of music. The top staff is a vocal line with a melodic line. The second staff is a piano accompaniment with chords. The third staff is a bass line with a rhythmic pattern. The fourth staff is a piano accompaniment with chords. The fifth staff is a drum part with a steady eighth-note pattern and a ride cymbal pattern marked with 'x's and an accent (>) in the final measure. A label 'ride cymbal' with an arrow points to the pattern.



side stick

This system contains five staves. The top staff is a treble clef with a melody of eighth and quarter notes. The second staff is a treble clef with rests. The third staff is a bass clef with a melody of eighth and quarter notes. The fourth staff is a treble clef with chords. The fifth staff is a drum set notation with 'x' marks and a 'side stick' label pointing to a specific stroke.



This system contains five staves. The top staff is a treble clef with a melody of eighth and quarter notes. The second staff is a treble clef with chords. The third staff is a bass clef with a melody of eighth and quarter notes. The fourth staff is a treble clef with rests. The fifth staff is a drum set notation with 'x' marks and a 'v' mark.